



Chheng P., Baran E., Touch B.T. 2004 Synthesis of all published information on ted tail tinfoil *Barbonymus altus* (“trey kahe”), based on FishBase 2004. WorldFish Center and Inland Fisheries Research and Development Institute, Phnom Penh, Cambodia. 16 pp.

## **Introduction**

This document results from the extraction and the editing by the authors of the information available in FishBase 2004.

FishBase is a biological database on fishes developed by the WorldFish Center (formerly ICLARM, the International Center for Living Aquatic Resources Management) in collaboration with the Food and Agriculture Organization of the United Nations (FAO) and with the support of the European Commission (EC).

These synopses present a standardized printout of the information on the above-mentioned species incorporated in FishBase as of 11 May 2004, is inspired from the format suggested for such documents by H. Rosa Jr. (1965, FAO Fish. Syn. (1) Rev 1, 84 p.).

We cannot guarantee the total accuracy of the information herein; also we are aware that it is incomplete and readers are invited to send complementary information and/or corrections, preferably in form of reprints or reports to the FishBase Project, WorldFish Center, MC P.O. Box 2631, Makati, Metro Manila 0718, Philippines.

### **Some hints on how to use the synopses**

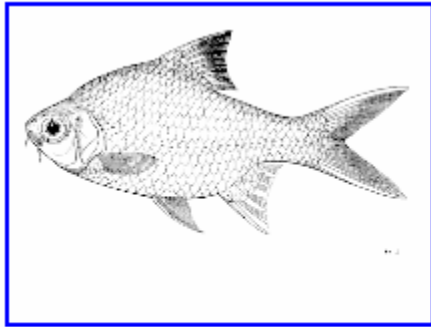
The following definitions are meant to help you better understand the way this synopsis presents information and document its sources.

Please refer to the FishBase book for more details; and do not hesitate to contact FishBase staff if you have suggestions or information that would improve the format or the contents of this synopsis.

- SpecCode : Numeric FishBase code, assigned to a species and used for internal purposes only.
- StockCode : Numeric FishBase code, assigned to the species in general, a wild population, or a cultured strain. Since, to date, only a few species have been separated into stocks, the StockCode usually refers to the species in general.
- MainRef. : Numeric FishBase code corresponding to the reference used as a source for most of the information within a table.
- Ref. : Numeric FishBase code corresponding to the reference associated with a specific entry or set of entries; when left empty, the source of information is the MainRef. Note that the references listed at the end of this synopsis are arranged according to their numeric codes, and not alphabetically.
- Empty fields : Imply information that is currently not available to the FishBase project and/or information which is available but which has not been entered as of 31-Mar-04 . Note that the character 0 (zero) is used as a valid numerical value, and does not indicate that no information is available.
- Choice fields: Much of the information in this synopsis was entered via multiple choice fields; the available alternatives must be considered when evaluating the wisdom of a given choice.
- Remarks or Comment fields: The free text included in such fields may have been taken verbatim from the source in "Ref.", in which case this should be regarded as a direct citation (but lacking quotation marks); alternatively, the text may have been modified/adapted from one or several sources. In the latter case, additional "Ref." numbers may be incorporated in the text.

*Barbonymus altus* (Günther, 1868)

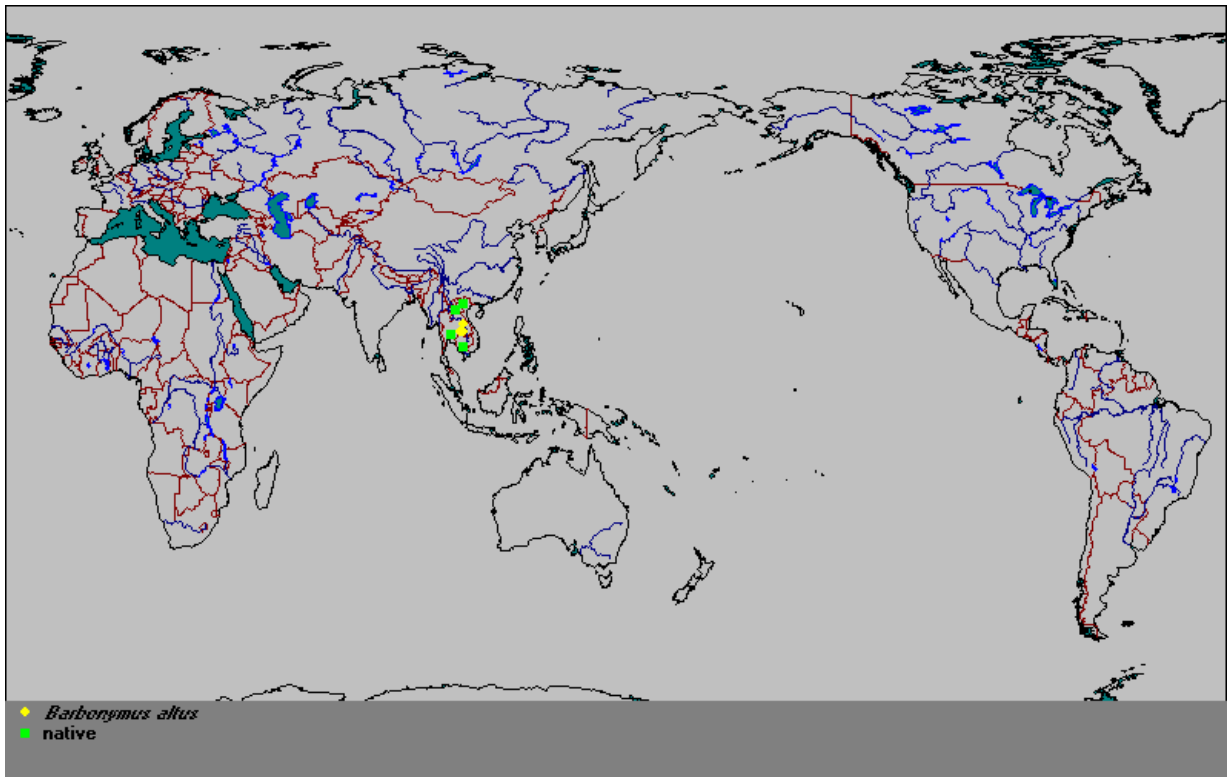
Red tailed tinfoil



picture (Baalt\_u1.gif) by [FAO](#)



picture (Baalt\_u0.jpg) by [Warren, T.](#)



## Summary information on the family *Cyprinidae*

Family : Cyprinidae (Minnows or carps)

Order : Cypriniformes

Class : Actino:pterygii (ray-finned fishes)

MainRef. : 007463

FamCode : 122

Number of genera : 210 Number of species : 2010

Occurs in : O Marine

○ Brackish

○ Freshwater

Aquarium fishes : many

First fossil record : lower Tertiary

Eocene

Ref. : 004879

Species currently in FishBase: Genera: 331 Species: 2408 (Including subspecies) complete : Yes

Remarks: Distribution: North America (northern Canada to southern Mexico), Africa, and Eurasia. Pharynx with 1-3 rows of teeth, each row with a maximum of 8 teeth. Usually thin lips, plicae or papillae absent; mouth sometimes suckerlike (*Garra* and *Labeo*). With or without barbels. Premaxilla usually borders the upper jaw making the maxilla entirely or almost entirely excluded from the gape. Usually protrusible upper jaw. Dorsal fin with spinelike rays in some. Primitive number of chromosomes  $2n=50$ , some with 48; polyploidy exists. Maximum length at least 2.5 m to probably 3 m in *Catlocarpio siamensis*; many species less than 5 cm. Mainly non-guarders, but in some species males build nests and/or protect the eggs.

Etymology: Greek, *kyprinos* = goldfish. 1828 ( Ref. 45335).

## Information on the genus *Barbonymus*

and its synonyms, after Eschmeyer March 2003 (Ref. 46206)

***Barbonymus***

Status : no revision

Gender : masculine

Kottelat, 1999, p. 595, CAS Ref: 24610

Type by original designation.

Type species : *Barbus schwanenfeldii*

Bleeker, 1853

Current genus: *Barbonymus*

## General information on *Barbonymus altus*

### Classification

Class	: Actinopterygii (ray-finned fishes)	MainRef.	027732
Order	: Cypriniformes		
Family	: Cyprinidae (Minnows or carps)		
Species	: <i>Barbonymus altus</i>		
Author	: (Günther, 1868)	Author Ref.	
	Date Eschmeyer, pers. comm.		

### Environment

Freshwater	: Yes	Habitat	: benthopelagic
Brackish	: No	Migrations	:
Saltwater	: No	Depth range	:

### Importance

Main catching method :					
Other methods	: (•) Seines	(•) Gillnets	O Castnets	(•) Traps	O Spears
	O Trawls	O Dredges	O Liftnets	O Hooks+Lines	O Other
Used for aquaculture	: commercial				Ref. 012693
Used as bait	: never/rarely				Ref.
Aquarium fish	: commercial		based mainly on capture		Ref. 006459
Game fish	: No				Ref.
Dangerous fish	: harmless				Ref.
Electrobiology	: no special ability				Ref.

### Size and age

Maximum length	(cm) (male/unsexed) :	20 SL	(female) :	Ref. 030857
Common length	(cm) (male/unsexed) :	15 SL	(female) :	Ref. 012693

### Remarks

Occurs at midwater depths in large and medium-sized rivers and floodplains. Feeds on various plant and animal matter. Commonly found near villages where it feeds on organic detritus disposed of by humans (Ref. 12693). Reported to be occasionally poisonous, causing vomiting, due the fruits it eats (Ref. 12369). Colonizes inundated forests and adults migrate back to the river in October. Young of the year follow thereafter when the water levels recede. Large-sized fish are marketed fresh while smaller ones are used to make prahoc and nuoc mam (Ref. 12693). Popular fish in the aquarium trade where it is sold under the name of "tin foil barb" (Ref. 12693). Captured from the wild for the ornamental fish trade in Thailand (Ref. 6459). Cultured in floating cages in Viet Nam (Ref. 12693).

### Synonyms, misidentifications, etc. used for *Barbonymus altus*

Synonym	Author	Status	Ref.
<i>Puntius altus</i>	(Günther, 1868)	new combination	26336
<i>Barbus altus</i>	Günther, 1868	original combination	1632
<i>Barbonymus altus</i>	(Günther, 1868)	new combination	43281
<i>Barbodes altus</i>	(Günther, 1868)	new combination	26336
<i>Puntius bocourti</i>	Bleeker, 1865	other	1632
<i>Barbodes foxi</i>	Fowler, 1937	junior synonym	26580

### Common names for *Barbonymus altus*

Name	Language	Country	Ref.
Kahe	Khmer	Cambodia	036651
Trey kahe	Khmer	Cambodia	012693
Trey kahè	Khmer	Cambodia	036654
Trey kahe khor horm	Khmer	Cambodia	012693
Trey kaho	Khmer	Cambodia	036654
Pa wien fai	Laotian	Lao People's Dem. Rep.	009497
Pba wian fai	Laotian	Lao People's Dem. Rep.	012369
Wien fai	Laotian	Lao People's Dem. Rep.	040382
Red tailed tinfoil	English	Thailand	006459
Pla kra hea tong	Thai	Thailand	042982
Pla mong ka	Thai	Thailand	042982
Pla pak	Thai	Thailand	042982
Pla ta pien tong	Thai	Thailand	009648
Cá he vàng	Vietnamese	Viet Nam	036625

### Distribution of *Barbonymus altus*

Asia: Mekong and Chao Phraya basins (Ref. 27732). Recorded from the Maeklong, Peninsular and Southeast Thailand river systems (Ref. 26336). MainRef.: 027732  
 Latitudinal range: ° - ° Temperature range: 22 - 27 °C Ref.: 2059  
 Status of threat: NL.

Country	Status	Ref.
Cambodia	native	012693
Occurs in the Mekong basin (Ref. 12693,27732,26580), around the Tonle Sap river, Great Lake (Ref. 36651), Stung Sang and Sékong at Stung Treng (Ref. 36654).		
Lao People's Dem. Rep.	native	027732
Occurs in the Mekong and the lower Xe Bangfai (Ref. 27732). Found below the Mun-Chin River to the Knone Falls (Ref. 37772) and at Hat Village in Muang Khong District (Ref. 37769). Reported to migrate upstream during the dry season in December/January in Southern Laos (Ref. 37769). Recent decline in fisheries attributed to "lee" (large immobile wing traps used in rapids below Lee Pee). Upstream non-reproductive migration occurs in Jan-Feb lasting 1 wk - 10 days and downstream migrations in May-July at night in Ban Hang Khone, just		

below the great waterfalls of the Mekong River (Ref. 9497). Observed to undergo migration at the fishing village of Ban Wernsonkham on Don Hat (Hat Island) above the Lee Pee Waterfalls (Ref. 10431). This species is occasionally poisonous, causing vomiting, due to the fruits it has eaten (Ref. 12369). Museum: Mekong, CAS 96270 (near Ban Hang Khone), CAS 93464 (just below Khone falls) (Ref. 5515). Also Ref. 4792, 9497, 30857, 36654, 37767,44002.

Thailand native 026336

Occurs in the Mekong, Chao Phraya (Ref. 27732), Maeklong, Peninsular and Southeast Thailand river systems (Ref. 26336). Found in Bangkok, Paknam and Kemarat. Captured from the wild for the ornamental fish trade (Ref. 6459). Museum: Mekong mainstream near Chiang Sen, CAS 96265 (Ref. 5515). Also Ref. 1632, 9648, 36654

Viet Nam native 036625

Found in Mekong delta (Ref. 36625). Cultured in floating cages (Ref. 12693).

### Summary information (no. of records) available for *Barbonymus altus*

**Level: species in general**      **StockCode: 027732**      **MainRef.: 027732**

Asia: Mekong and Chao Phraya basins Ref. 27732). Recorded from the Maeklong, Peninsular and Southeast Thailand river systems (Ref. 26336)

**Level: species in general**

Ecology	1	Max. sizes	0	Strains	0
Food Items	4	FAO catches	15502	Diseases	0
Food consumption	0	Genetics	1	Ciguatera	0
Diet composition	0	Allele frequency	20	Ecotoxicology	0
Ration	0	Heritability	0	Metabolism	0
Predators	0	Reproduction	0	Gill area	0
Morphology	1	Spawning	1	Swimming Type	0
Processing	0	Eggs	0	Swimming speed	0
Growth/mortality	0	Egg dev't.	0	Vision	0
Maturity	0	Larvae	0	Brains	0
Recruitment	0	Larval dynamics	0	Introductions	0
L/Wrelat.	0	Aquaculture	0	Occurrence	20

### Morphology of *Barbonymus altus*

**Level: species in general**      **StockCode: 008482**      **MainRef.: 027732**

Appearance refers to : O females O males

#### DIAGNOSTIC CHARACTERS

Broad red distal margin with no black submarginal stripe along each lobe of the caudal fin; red pelvic and anal fins; a black distal blotch on the dorsal fin; the body depth 1.8-2.2 times in standard length (Ref. 27732).

#### DESCRIPTIVE CHARACTERS

Operculum present : No

#### MERISTIC CHARACTERS

Scales on lateral line

#### Dorsal fins

Number of fins : 1 - spines total

## Genetic information for *Barbonymus altus*

Level : species in general

MainRef.: 030184

Locality : Central Thailand, Thailand

Ref: 030184

Chromosome number (haploid) : 25

Chromosome number (diploid) : 50

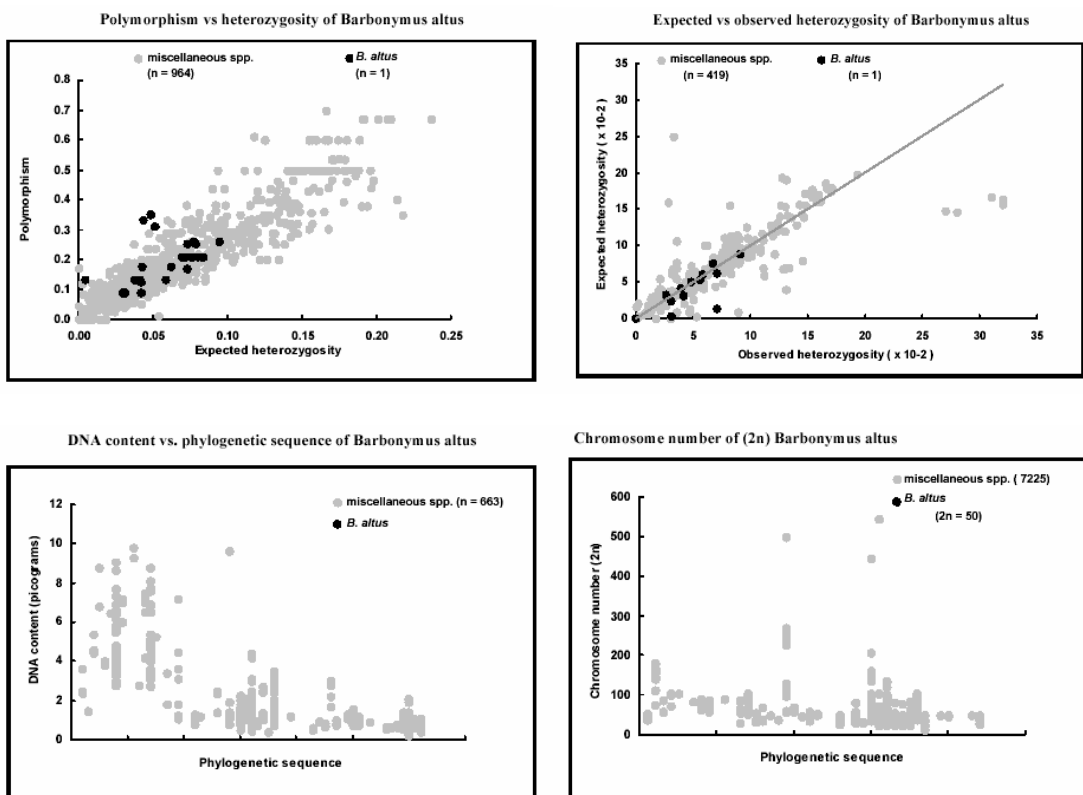
Genetic marker(s) present : No

DNA content (picogram, haploid) :

Chromosome arm no :84

Ref: 030184

Sex-determining mechanism



## Electrophoretic data for *Barbonymus altus*

Ref.: 005950

Refers to species in general

Locality : Thailand

Macklong River, Bachiralongorn Dam Reservoir

Method : Starch gel electrophoresis

Total loci : 20 Heterozygosity (Observed) : 0.0000

Polymorphic loci : 0.0000 Heterozygosity (Expected) : 0.0000



## Spawning Information for *Barbonymus altus*

<b>Locality</b> : Laos , Mekong basin at Hat Village, Muang Khong District	<b>Stockcode:</b> 008482
<b>Season</b> (% of mature females; 111= presence of mature females) :	<b>Main Ref.:</b> 037769
Jan Feb Mar Apr May Jun Jul Aug Sep Oct Nov 111 Dec 111	<b>Data Ref.:</b> 037769 111

## Ecology of *Barbonymus altus*

<b>Level</b> : species in general	<b>StockCode</b> : 008482	<b>008171</b>	<b>: 009497</b>
<b>Habitats</b>			Ref.: 009497
Streams : Yes	Lakes : No	Caves : No (exclusively	: No
Estuaries/lagoons/brackish seas : No			
Intertidal : No	soft : No	rocky: No	mangroves/marshes/swamps No
Marine : No	oceanic : No	neritic : No	coral reefs : No
tropical	soft bottom: No	hard bottom: No	seagrassbeds : No macrophyte : No
<b>Feeding</b>			
Feeding Type	: mainly plants/detritus (troph. 2-2.19)		Ref: 009497
Feeding Habit	: grazing on aquatic plants		Ref: 009497
From indiv. food items	: 2.4 0.18	Trophic level estimate	

### Additional remarks

Effects annual upstream and downstream non-reproductive and reproductive migrations.

## Food items for *Barbonymus altus*

<b>Level:</b>	<b>species general</b>	<b>StockCode:</b> 008482
<b>in</b>		
Food item		Ref.
<b>detritus</b>		
detritus	debris	unidentified <i>unidentified</i> 012693
<b>plants</b>		
other plants	benthic algae/weeds	unidentified <i>unidentified</i> 009497
	terrestrial plants	unidentified <i>unidentified</i> 012369
<b>zoobenthos</b>		
other benth.	n.a./other benth.	unidentified <i>unidentified</i> 012693
invertebrates	Invertebrates	
Total: 4		

## References used for *Barbonymus altus*

- 001632** Suvatti, C. 1981. Fishes of Thailand. Royal Institute of Thailand, Bangkok. 379 p. [not seen]
- 002059** Baensch, H.A. and R. Riehl. 1991. Aquarien atlas. Bd. 3. Melle: Mergus, Verlag für Natur- und Heimtierkunde, Germany. 1104 p.
- 005950** Kornfield, I. and K.E. Carpenter. 1984. Cyprinids of Lake Lanao, Philippines: taxonomy validity, evolutionary rates and speciation scenarios. p. 69-84. In A.A. Echelle and I. Kornfield (eds.) Evolution offish species flocks. University of Maine at Orone Press, Maine, U.S.A.
- 006459** Ukkatawewat, S. The taxonomic characters and biology of some important freshwater fishes in Thailand. Manuscript. National Inland Fisheries Institute, Department of Fisheries, Ministry of Agriculture, Bangkok, Thailand, 55 p.
- 009497** Roberts, T.R. 1993. Artisanal fisheries and fish ecology below the great waterfalls of the Mekong River in southern Laos. Nat. Hist. Bull. SiamSoc. 41:31-62.
- 009648** Sidthimunka, A. 1970. A report on the fisheries survey of the Mekong River in the vicinity of the Pa Mong Dam site. Inland Fisheries Division, Department of Fisheries, Bangkok, Thailand. 75 p.
- 010431** Roberts, T.R. and T.J. Warren. 1994. Observations of fishes and fisheries in southern Laos and northeastern Cambodia, October 1993-February 1994. Nat. Hist. Bull. Siam. Soc. 42:87-115.
- 012369** Roberts, T.R. and I.G. Baird. 1995. Traditional fisheries and fish ecology on the Mekong River at Khone waterfalls in southern Laos. Nat. Hist. Bull. Siam. Soc. 43:219-262.
- 012693** Rainboth, W.J. 1996. Fishes of the Cambodian Mekong. FAO Species Identification Field Guide for Fishery Purposes. FAO, Rome, 265 p.
- 012975** Taki, Y. 1978. An analytical study of the fish fauna of the Mekong basin as a biological production system in nature. Research Institute of Evolutionary Biology Special Publications no. 1, 77 p. Tokyo, Japan.
- 026336** Vidthayanon, C., J. Karnasuta and J. Nabhitabhata. 1997. Diversity of freshwater fishes in Thailand. Office of Environmental Policy and Planning, Bangkok. 102 p.
- 026580** Doi, A. 1997. A review of taxonomic studies of cypriniform fishes in Southeast Asia. Jap. J. Ichthyol. 44 (1): 1-33.
- 027732** Kottelat, M. 1998. Fishes of the NamTheun and Xe Bangfai basins, Laos, with diagnoses of twenty-two new species (Teleostei: Cyprinidae, Balitoridae, Cobitidae, Cobiidae and Odontobutidae). Ichthyol. Explor. Freshwat. 9(1):1-128.
- 030168** Magtoon, W. and R. Arai. 1989. Karyotypes of five *Puntius* species and one *Cyclocheilichthys* species (Pisces, Cyprinidae) from Thailand. Bull. Natn. Sci. Mus., Ser.A. 15(3): 167-175. Tokyo.
- 030857** Baird, I. G., V. Inthaphaisy, P. Kisouvannalath, B. Phylavanh and B. Mounsouphom. 1999. The fishes of southern Lao. Lao Community Fisheries and Dolphin Protection Project. Ministry of Agriculture and Forestry, Lao PDR.161 p.
- 031402** Swedish Museum of Natural History. 1999. NRM Ichthyology collection database. Ichthyology Section, Department of Vertebrate Zoology, Swedish Museum of Natural History, Stockholm, Sweden.
- 031517** Wu, H.L., K.T. Shao and C.F. Lai, Editors. 1999. Latin-Chinese dictionary of fishes names. The Sueichan Press, Taiwan.
- 033813** Lim, P., S. Lek, S.T. Touch, S.-O. Mao and B. Chhouk. 1999. River (Cambodia, Southeast Asia). Aquat. Living Resour. 12(6):379-386.
- 034370** Klinkhardt, M, M. Tesche and H. Greven. 1995. Database offish chromosomes. Westarp Wissenschaften.
- 036625** Khoa, T.T. and T.T.T. Huong. 1993. Dinh Loai Cá Nước Ngọt Vùng Đông Bang Sông Cuu Long. Khoa Thuy San Truong Dai Hoc Can Tho, p 3-8.
- 036651** Thuok, N and L. Sina. 1997. Review of the fisheries and aquaculture sector in Cambodia. p. 35-36. CMB\95\003. "Natural Resources-Based Development Strategy for the Tonle Sap Area.
- 036654** Kottelat, M. 1985. Fresh-water fishes of Kampuchea. Hydrobiologia 121:249-279.

- 036686** Anon. 1998. Natural resources-based development strategy for the Tonlé Sap area, Cambodia. Final report: Sectoral Studies. CMB/95/003, Vol. 2 partB.
- 037769** Singhanouvong, D., C. Soulignavong, K. Vonghachak, B. Saadsy and T.J. Warren. 1996. The main dry-season fish migrations of the Mekong mainstream at Hat Village, Muang Khong District, Hee Village, Muang Mouan District and Hatsalao Village, Paxse. Indigenous Fishery Development Project, Fisheries Ecology Technical Report no. 3. Lao People's Democratic Republic. 130 p.
- 037772** Hill, M.T. and S.A. Hill. 1994. Fisheries ecology and hydropower in the lower Mekong River: an evaluation of run-of-the-river projects. Mekong Secretariat, Bangkok, Thailand. 106 p.
- 038732** Anon. 2001. Fish collection database of the National Museum of Natural History (Smithsonian Institution). Smithsonian Institution - Division of Fishes.
- 040380** Lieng, S., C. Yim and N.P. van Zalinge. 1995. Freshwater fisheries of Cambodia, I: the bagnet (dai) fishery in the Tonle Sap river. Asian Fish. Sci. 8:255-262.
- 040381** Noraseng, P. and T.J. Warren. 2001. A report on the rapid assessment of lower Sedone fisheries using C.P.U.E.: final draft report. Indigenous Fisheries and Aqua-Ecosystems Management Project Technical Report 1, 8 p.
- 040382** Noraseng, P. and T.J. Warren. 2001. A report on the main aqua-ecosystem characteristics in Sanasomboun District, Southern Lao PDR, with respect to village fisheries. Indigenous Fisheries and Aqua-Ecosystems Management Project Technical Report No. 2. 26 p.
- 042982** Chuenpagdee, R. 2002. Checklist of Thai names and scripts. Personal communication, April 2002.
- 044002** Baird, I., Z. Hogan, B. Phylaivanh, and P. Moyle. 2001. A communal fishery for the migratory catfish *Pangasius macronema* in the Mekong River. Asian Fisheries Science 14:25-41.